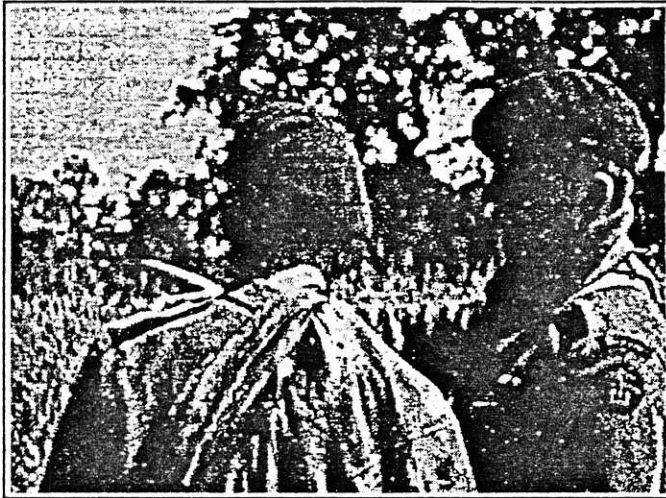


# POINT OF THE SWORD



## SCENARIO BB3



LANGRUNE-SUR-MER, FRANCE, 6 June 1944: The Allied landings at Normandy were quickly followed by advances into the villages that lined the coast. A detachment of Brigadier B.W. Leicester's 4th Brigade Commandos pushed into the sleepy village of Langrune-sur-Mer from Sword Beach and met stiff resistance from the veterans of General Feuchtinger's 21st Panzer Division. The Commandos radioed for assistance from a French Canadian unit to the west who had just taken Saint-Aubin-sur-Mer after three hard hours of fighting without tank support. With help on the way, the Commandos pressed the attack.

### BOARD CONFIGURATION:

#### HANDICAPS:

- G3: Use G2, and the British reinforcements enter on Turn 3.  
G2: Use G1, and all Rowhouses are single story Rowhouses.  
G1: Add one 51mm MTR to the British at start force.  
B1: Add one 4-6-8 to the German OB.  
B2: Use B1, and add one German MMG to the German OB.  
B3: Use B2, and decrease the game length to 7 turns.



10

**VICTORY CONDITIONS:** The British win immediately when they Control  $\geq 2$  buildings containing Fortified Locations (see SSR 2).

### TURN RECORD CHART

GERMAN Sets Up First	1	2	3	4	5	6	7	8	END
BRITISH Moves First [140]									



Reinforced elements of the 2nd Battalion, 21st Panzer Division [ELR: 4] set up on/south of hexrow R: [SAN: 4]

4-6-8	2-4-8	9-1	8-1	8-0	7-16	5-12	3-8	50-12-13
9						3		



Advance elements of Leicester's 4th Brigade Commandos [ELR:5] set up on/north of hexrow J: [SAN: 4]

6-4-8	9-2	8-1	7-0	1-4-9	2-7	51-12-11	30-1
10					3		4

Elements of Regiment de la Chaudiere [ELR:4] enter on Turn 4 along the west edge on/north of M10:

4-5-8	9-1	8-0	7-16	2-7	51-12-11
12		2	4	2	

### SPECIAL RULES:

- EC are Moderate with no wind at start. Kindling Attempts are NA.
- The Germans must Fortify (Tunnels are NA) one Location in three different stone buildings; connected Rowhouses are considered one building for setup/victory purposes, but otherwise are treated as Rowhouses.
- The Germans may use HIP for one squad-equivalent (and all SMC/SW stacked with it).
- The British 4th Brigade Commandos are Assault Engineers (H1.22) and Commandos (H1.24). All British mortars have a

Smoke Depletion number of "9".

**AFTERMATH:** A furious fight was put up by both sides and soon the battle was reduced to a bitter exchange of bullets between the houses and gardens of the village. The Germans were in fortified positions, forcing the Commandos to use demolitions to breach the buildings. The Germans gave way inch by inch as the Commandos continued to push into the village. When advance elements of the crack Regiment de la Chaudiere arrived at the scene, the Commandos let out a cheer. The Canadians had heavy support weapons which dealt out a murderous rain of fire on the German positions. After several hours of fighting, the Germans finally broke and routed. Many were taken prisoner, but more lay dead in surrounding streets and buildings.